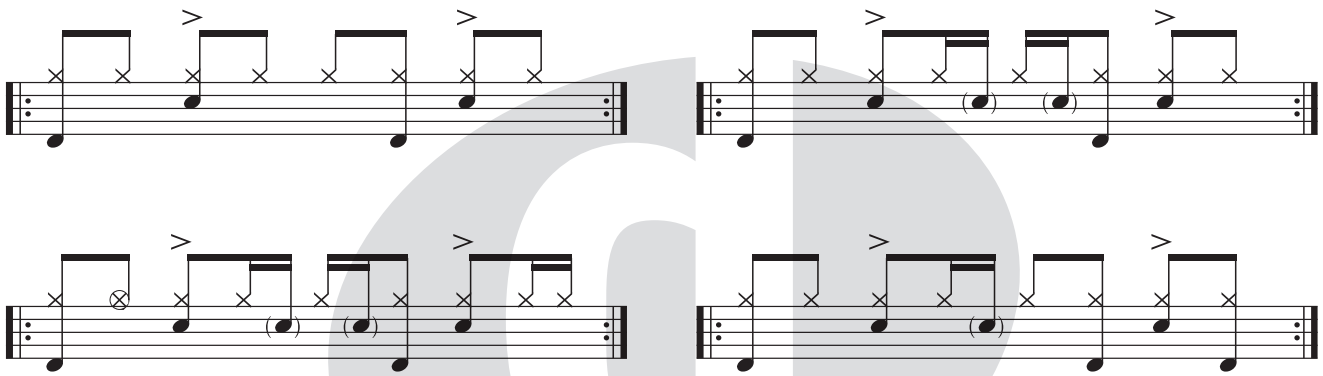


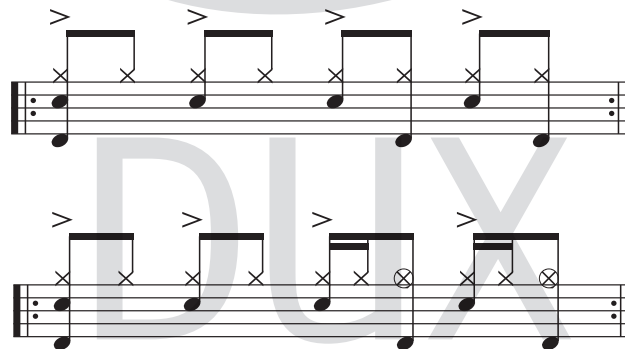
Santa Claus Is Comin' To Town

While doing the arrangement of this classy, American Christmas tune we thought about a tribute to the Funk Brothers, the legendary studio band of the MOTOWN label in Detroit, who gave birth to more no. 1 hits than Elvis Presley, The Rolling Stones and The Beatles together! So we tried here to give Santa a definitive Motown soul vibe on his way to town.

The song has an AABA form. After a 4-bar intro, the 32-bar form starts with a STOP on 1 and a short kick on the "and" of 3. Here are some grooves that work in the A section:



In the B section it's great to play the typical Motown soul beat with quarter notes on the snare drum:



Variation:



The whole AABA form is played 3 times. Just pay attention that the stops and kicks are not played during the 2nd time through (saxophone solo). Have fun and let it roll!

1

Santa Claus Is Comin' To Town

2

with drums

Playalong

Music: J. Fred Coots / Words: Haven Gillespie
Arr: Gerwin Eisenhauer / Bernd Meyer

Intro Funky 8th note Groove

A 2nd time play groove!

Stop

B Soul Beat

repeat 3 times

Ending

Stop